

For Product Step File or 3D Model Send a Request Mail To info@nrack.com



Photo View



MS 705-1-1



MS 705-1-2



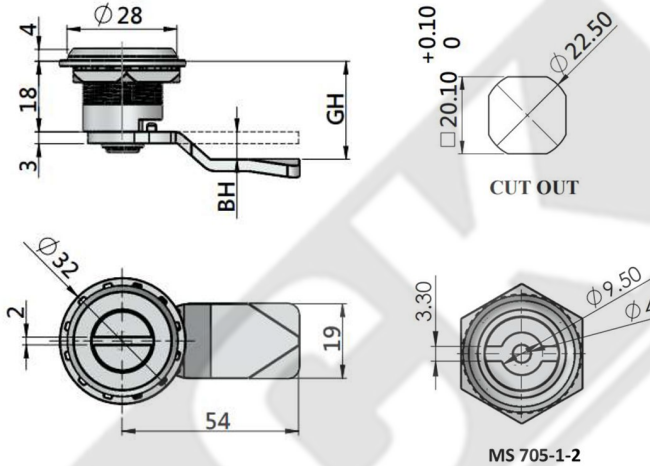
MS 705-2-2



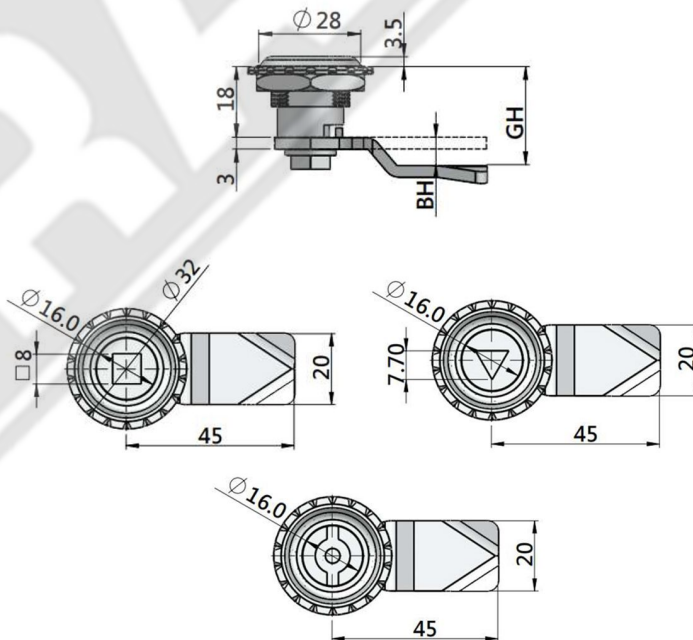
MS 705-2-3

IP65 Lock Available on Request

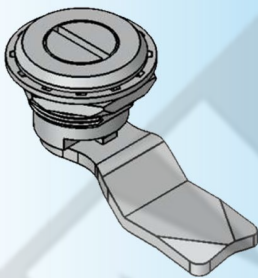
MS 705-1-1/-2



MS 705-2-1/-2/-3



3D Rendered View



MS 705

- Material: Zinc die-casting and stainless steel lock body are available
- Panel thickness: 1-5mm

PRODUCT NO	FINISH	INSERT	GRIPPING HEIGHT	BENDING HEIGHT	PRODUCT NO	FINISH	INSERT	GRIPPING HEIGHT	BENDING HEIGHT
MS705-1-1.1	CHROME PLATING	SLOT INSERT	18	00	MS 705-2-2.1	CHROME PLATING	TRIANGULAR INSERT	18	00
MS705-1-1.2			20	02	MS 705-2-2.2			20	02
MS705-1-1.3			25	07	MS 705-2-2.3			25	07
MS705-1-1.4			30	12	MS 705-2-2.4			30	12
MS705-1-1.5			35	17	MS 705-2-2.5			35	17
MS705-1-1.6			40	22	MS 705-2-2.6			40	22
MS705-1-1.7			54	36	MS 705-2-2.7			54	36
MS705-1-2.1	CHROME PLATING	DOUBLE BIT INSERT	18	00	MS 705-2-3.1	CHROME PLATING	SQUARE INSERT	18	00
MS705-1-2.2			20	02	MS 705-2-3.2			20	02
MS705-1-2.3			25	07	MS 705-2-3.3			25	07
MS705-1-2.4			30	12	MS 705-2-3.4			30	12
MS705-1-2.5			35	17	MS 705-2-3.5			35	17
MS705-1-2.6			40	22	MS 705-2-3.6			40	22
MS705-1-2.7			54	36	MS 705-2-3.7			54	36